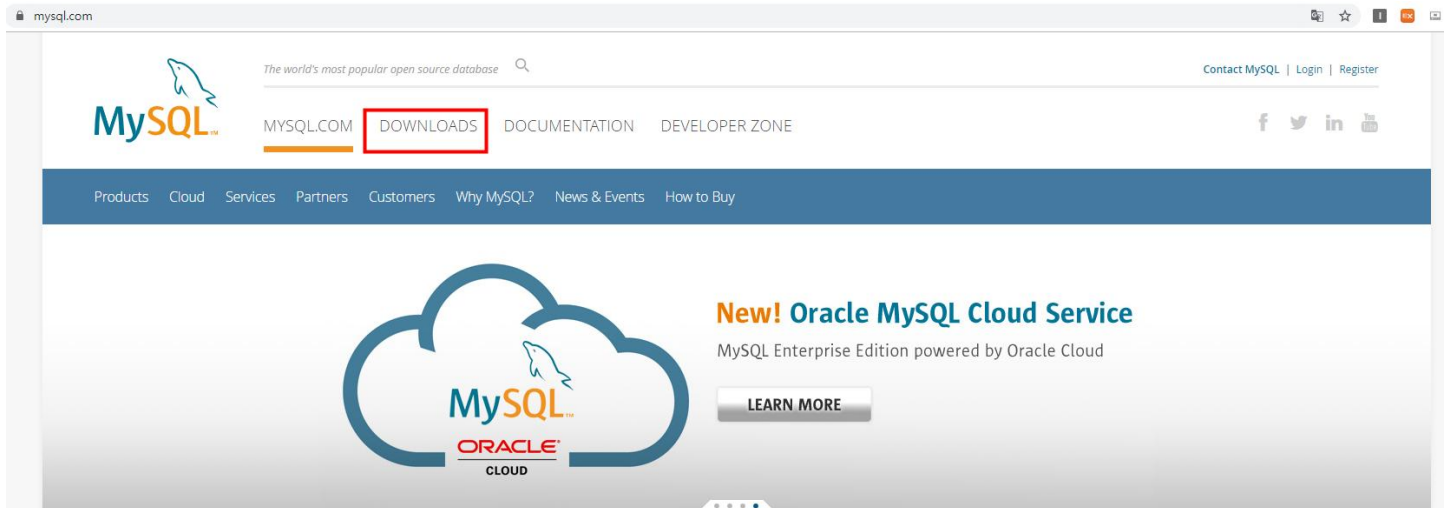
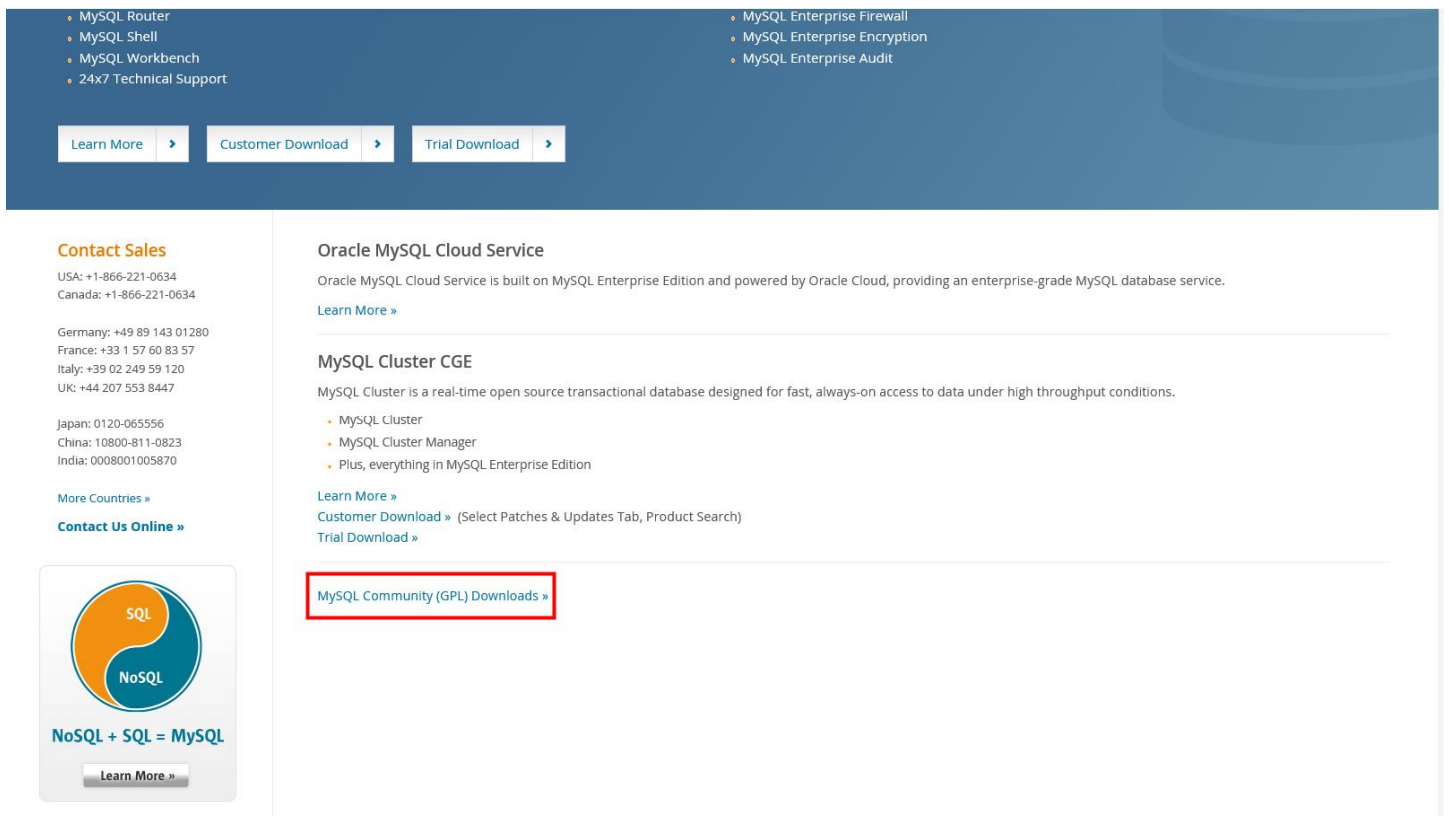


\* MySQL 설치 진행

1. mysql.com에 접속 → DOWNLOAD 링크 클릭



2. 하단에 MYSQL Community Edition(GPL) 다운로드 클릭



### 3. MySQL Installer for Windows 클릭

#### MySQL Community Downloads

- MySQL Yum Repository
- MySQL APT Repository
- MySQL SUSE Repository
  
- MySQL Community Server
- MySQL Cluster
- MySQL Router
- MySQL Shell
- MySQL Workbench
  
- **MySQL Installer for Windows**
- MySQL for Excel
- MySQL for Visual Studio
- MySQL Notifier
  
- Connector/C (libmysqlclient)
- Connector/C++
- Connector/J
- Connector/NET
- Connector/Node.js
- Connector/ODBC
- Connector/Python
- MySQL Native Driver for PHP
  
- MySQL Benchmark Tool
- Time zone description tables
- Download Archives

**ORACLE** © 2019, Oracle Corporation and/or its affiliates

[Legal Policies](#) | [Your Privacy Rights](#) | [Terms of Use](#) | [Trademark Policy](#) | [Contributor Agreement](#) | [Cookie Preferences](#)

### 4. 용량이 큰 파일 다운로드

#### MySQL Community Downloads

MySQL Installer

**General Availability (GA) Releases**

### MySQL Installer 8.0.18

Select Operating System:  
 Looking for previous GA versions?

<b>Windows (x86, 32-bit), MSI Installer</b> <small>(mysql-installer-web-community-8.0.18.0.msi)</small>	8.0.18	18.6M	<a href="#">Download</a>
<b>Windows (x86, 32-bit), MSI Installer</b> <small>(mysql-installer-community-8.0.18.0.msi)</small>	8.0.18	415.1M	<a href="#">Download</a>

MD5: c509966c1033462027a009cc51a98c74 | [Signature](#)

MD5: 906b5f84343d487f716f03b5925d8286 | [Signature](#)

We suggest that you use the MD5 checksums and GnuPG signatures to verify the integrity of the packages you download.

**ORACLE** © 2019, Oracle Corporation and/or its affiliates

[Legal Policies](#) | [Your Privacy Rights](#) | [Terms of Use](#) | [Trademark Policy](#) | [Contributor Agreement](#) | [Cookie Preferences](#)

## 5. Download 클릭

**MySQL Installer 5.7.21**

Select Operating System:

[Looking for previous GA versions?](#)

<b>Windows (x86, 32-bit), MSI Installer</b> <small>(mysql-installer-web-community-5.7.21.0.msi)</small>	5.7.21	18.6M	<a href="#">Download</a>
<b>Windows (x86, 32-bit), MSI Installer</b> <small>(mysql-installer-community-5.7.21.0.msi)</small>	5.7.21	370.8M	<a href="#">Download</a>

We suggest that you use the MD5 checksums and GnuPG signatures to verify the integrity of the packages you download.

## 6. No thanks 클릭

# Begin Your Download

mysql-installer-community-5.7.21.0.msi

**Login Now or Sign Up for a free account.**

An Oracle Web Account provides you with the following advantages:

- Fast access to MySQL software downloads
- Download technical White Papers and Presentations
- Post messages in the MySQL Discussion Forums
- Report and track bugs in the MySQL bug system
- Comment in the MySQL Documentation

**Login »**

using my Oracle Web account

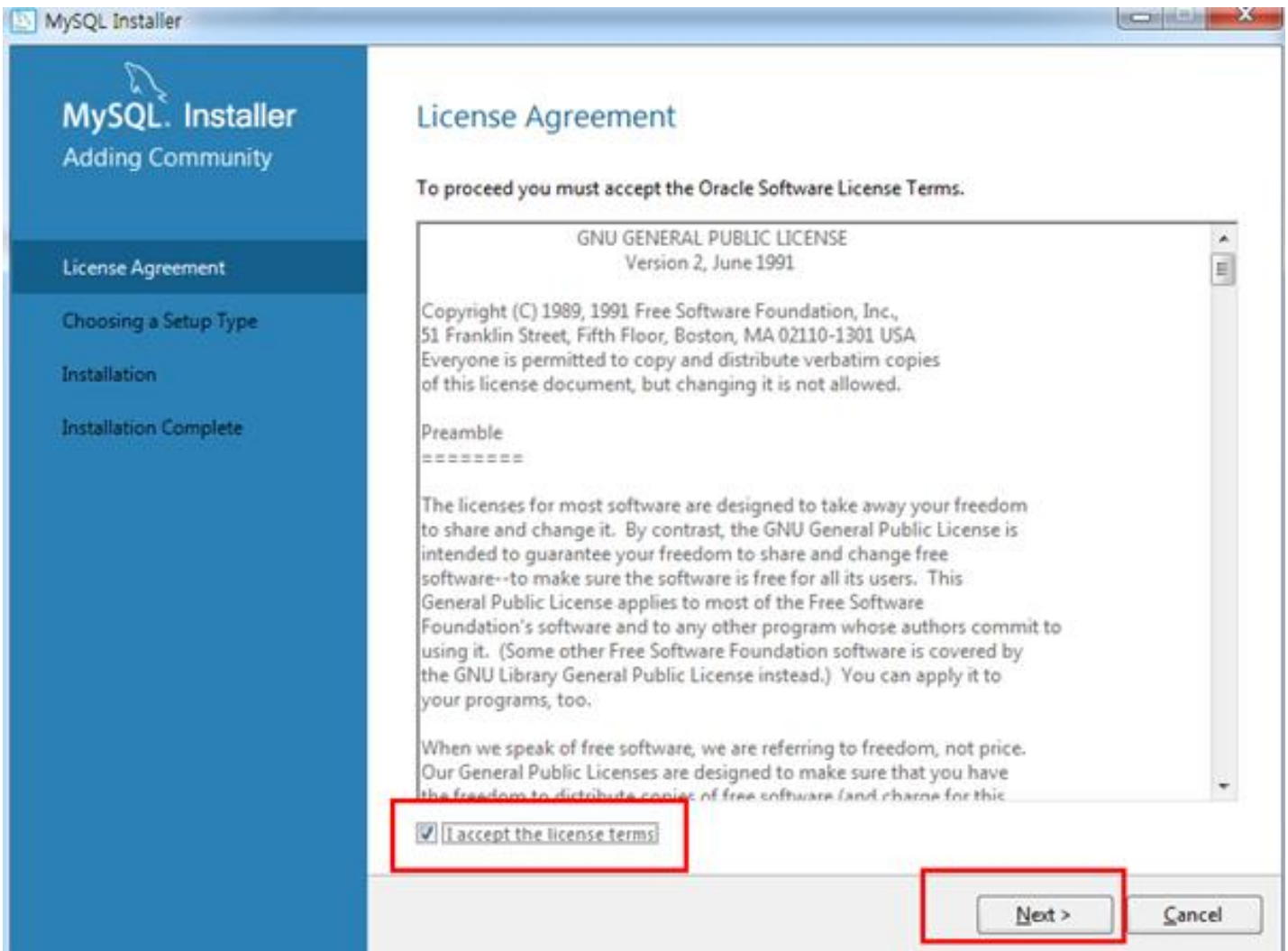
**Sign Up »**

for an Oracle Web account

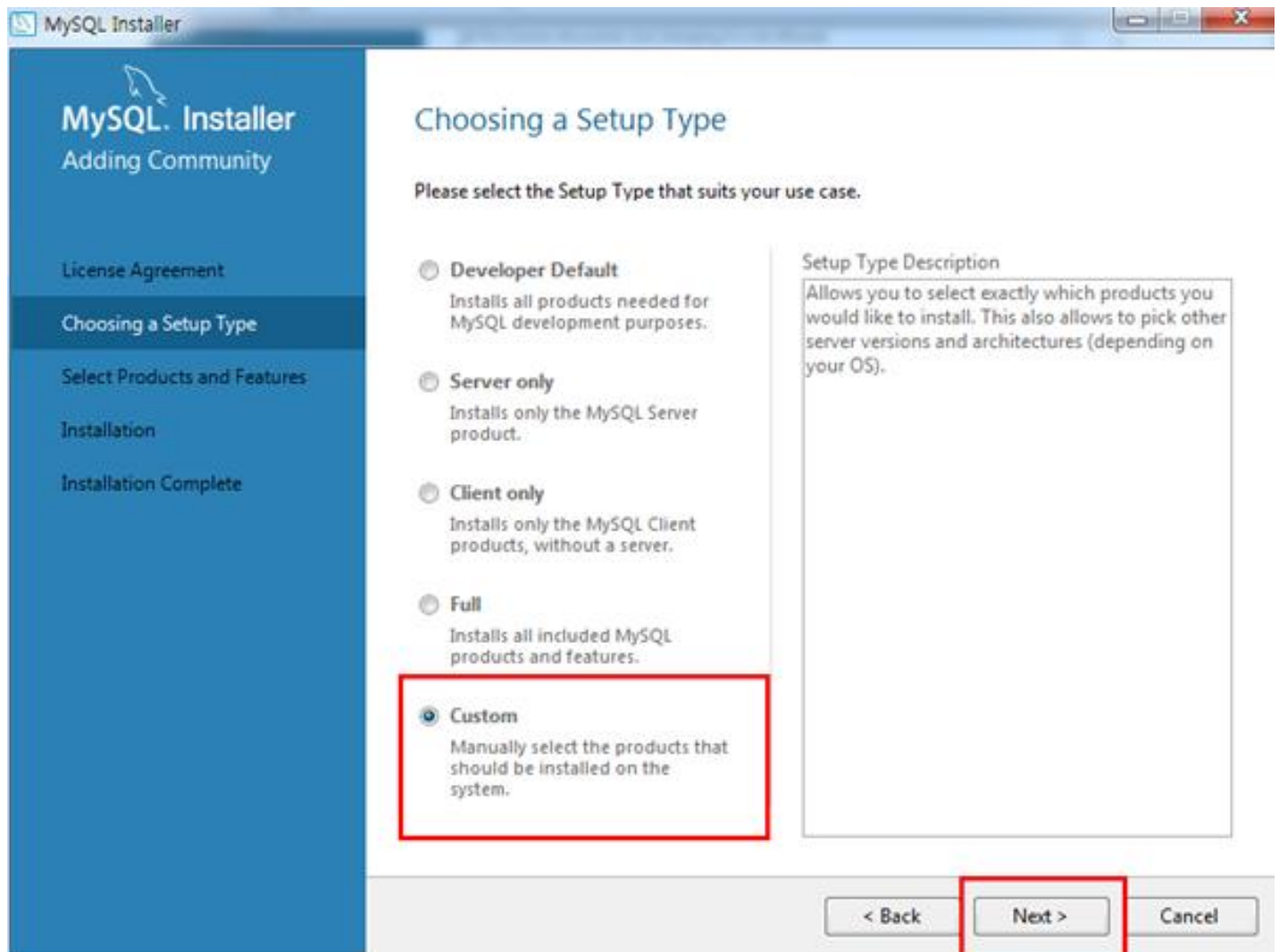
MySQL.com is using Oracle SSO for authentication. If you already have an Oracle Web account, click the Login link. Otherwise, you can sign up for a free account by clicking the Sign Up link and following the instructions.

**No thanks, just start my download.**

## 7. 설치 파일 실행 → 라이선스 동의 후 Next 클릭

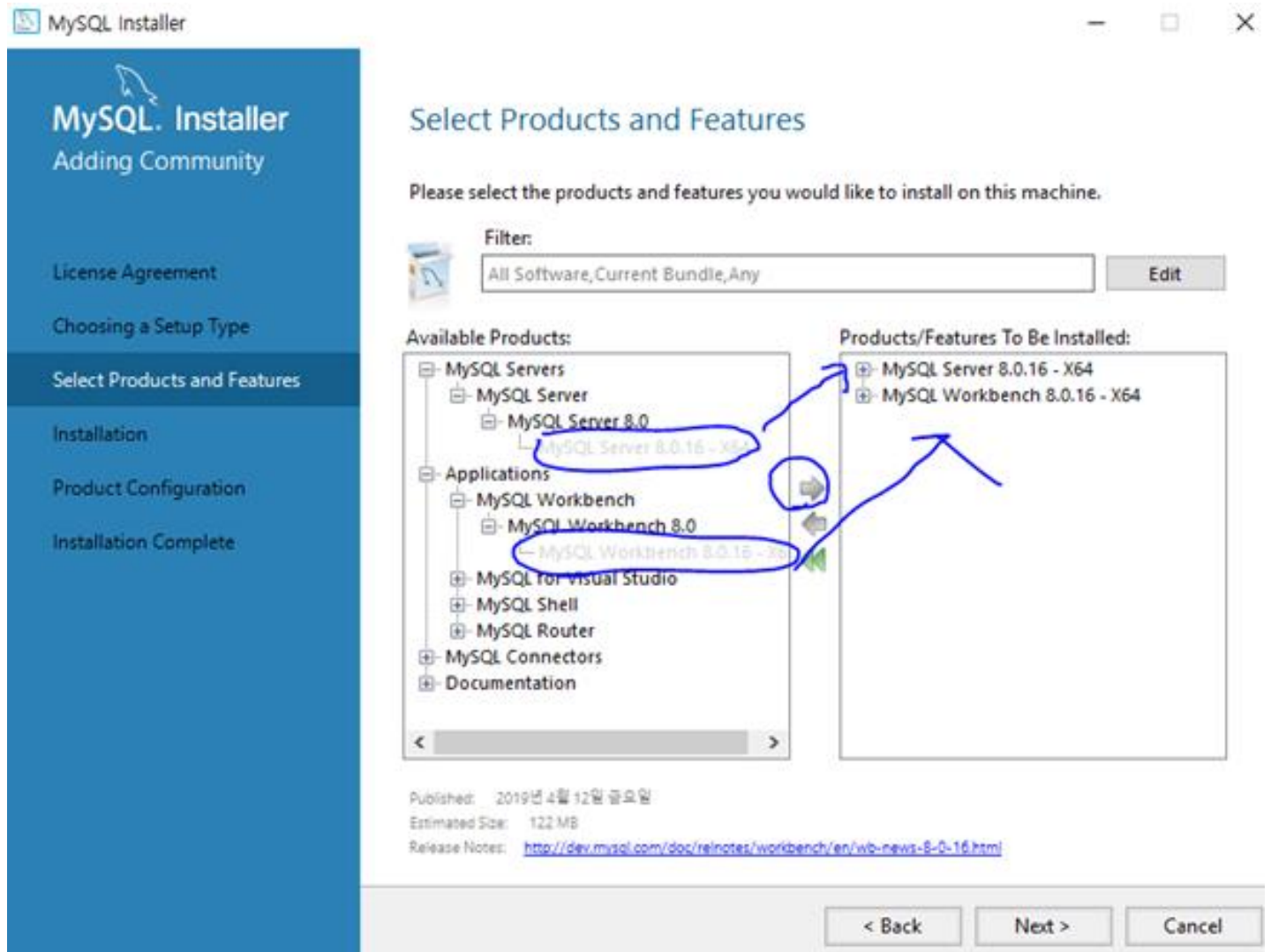


## 8. Custom 클릭 후 Next

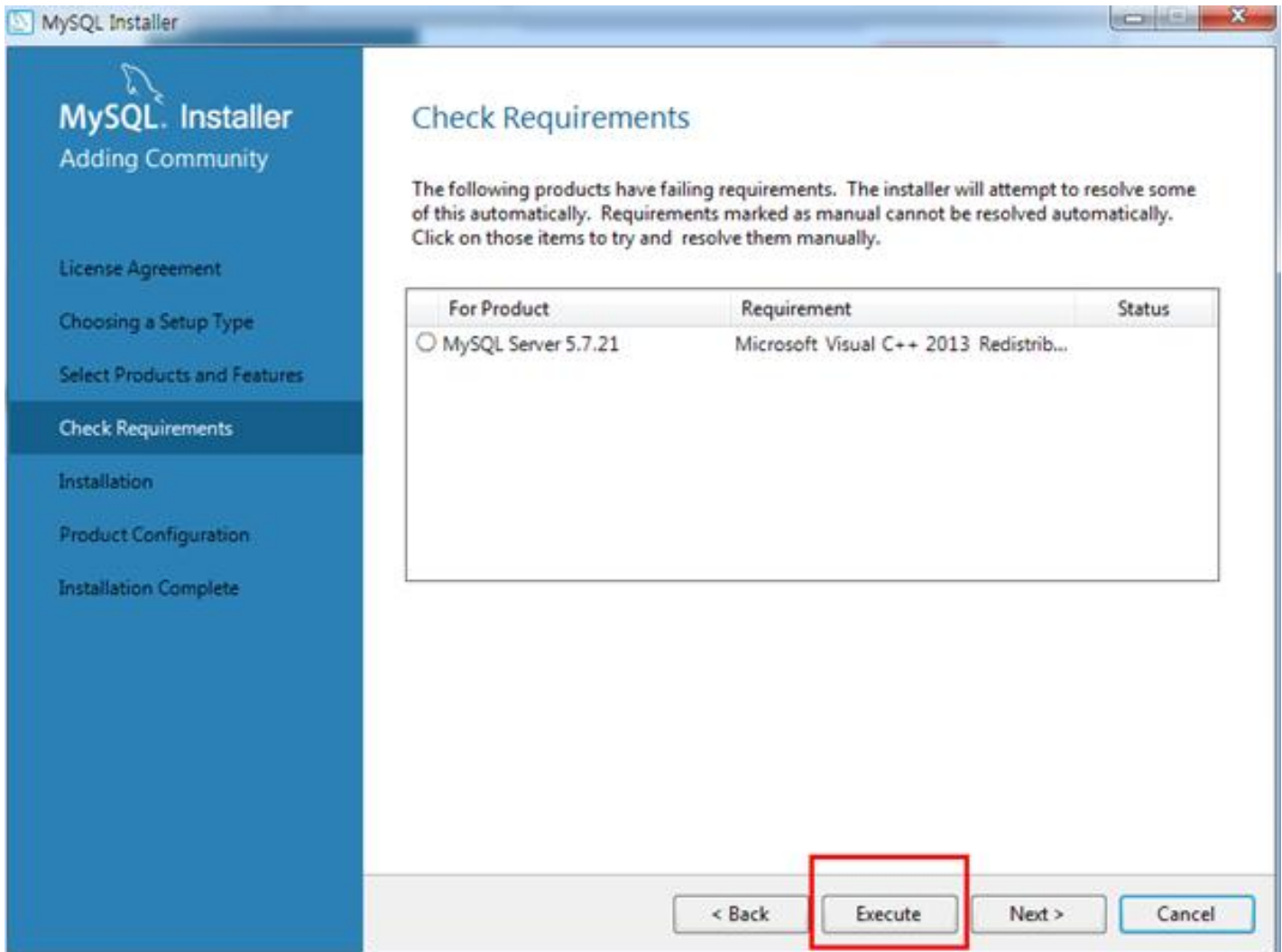


## 9. 3개의 프로그램을 선택하여 설치

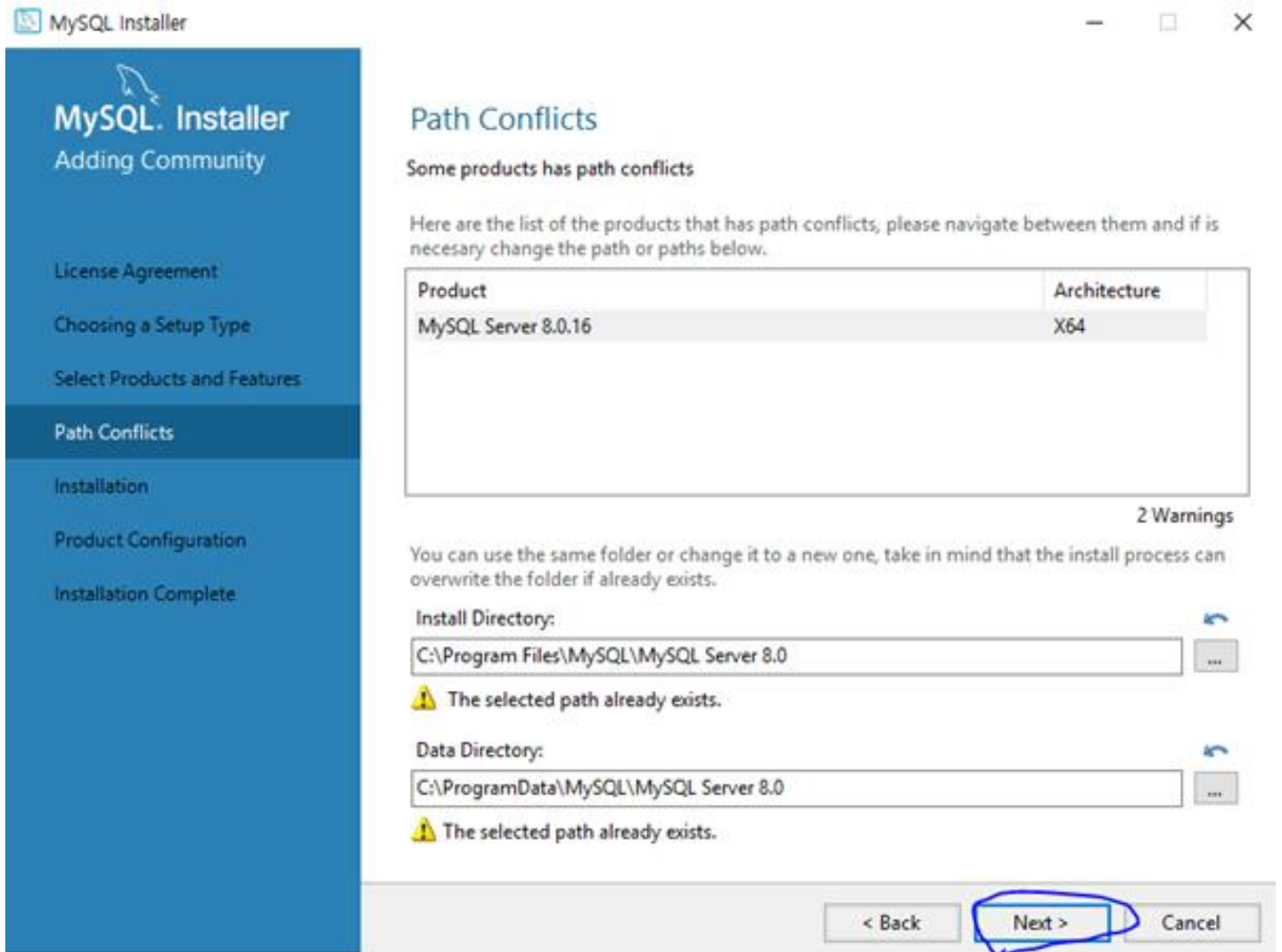
- ① MySQL Server 탭 아래에 있는 MySQL Server 8.0.11 x64 파일,
  - ② Application 탭 아래 MySQL Workbench,
  - ③ MySQL Connectors > Connector/J
- 화살표를 이용하여 오른쪽에 담고 Next클릭



10. Microsoft Visual C++ 2013 미설치 했을 시에만 뜨는 화면, Execute를 눌러 설치하고 진행



## 11. Execute 버튼을 눌러 설치 시작





MySQL Installer

# MySQL. Installer

Adding Community

License Agreement

Choosing a Setup Type

Select Products and Features

Path Conflicts



**Installation**

Product Configuration

Installation Complete

## Installation

The following products will be installed.

Product	Status	Progress	Notes
 MySQL Server 8.0.16	Ready to Install		
 MySQL Workbench 8.0.16	Ready to Install		

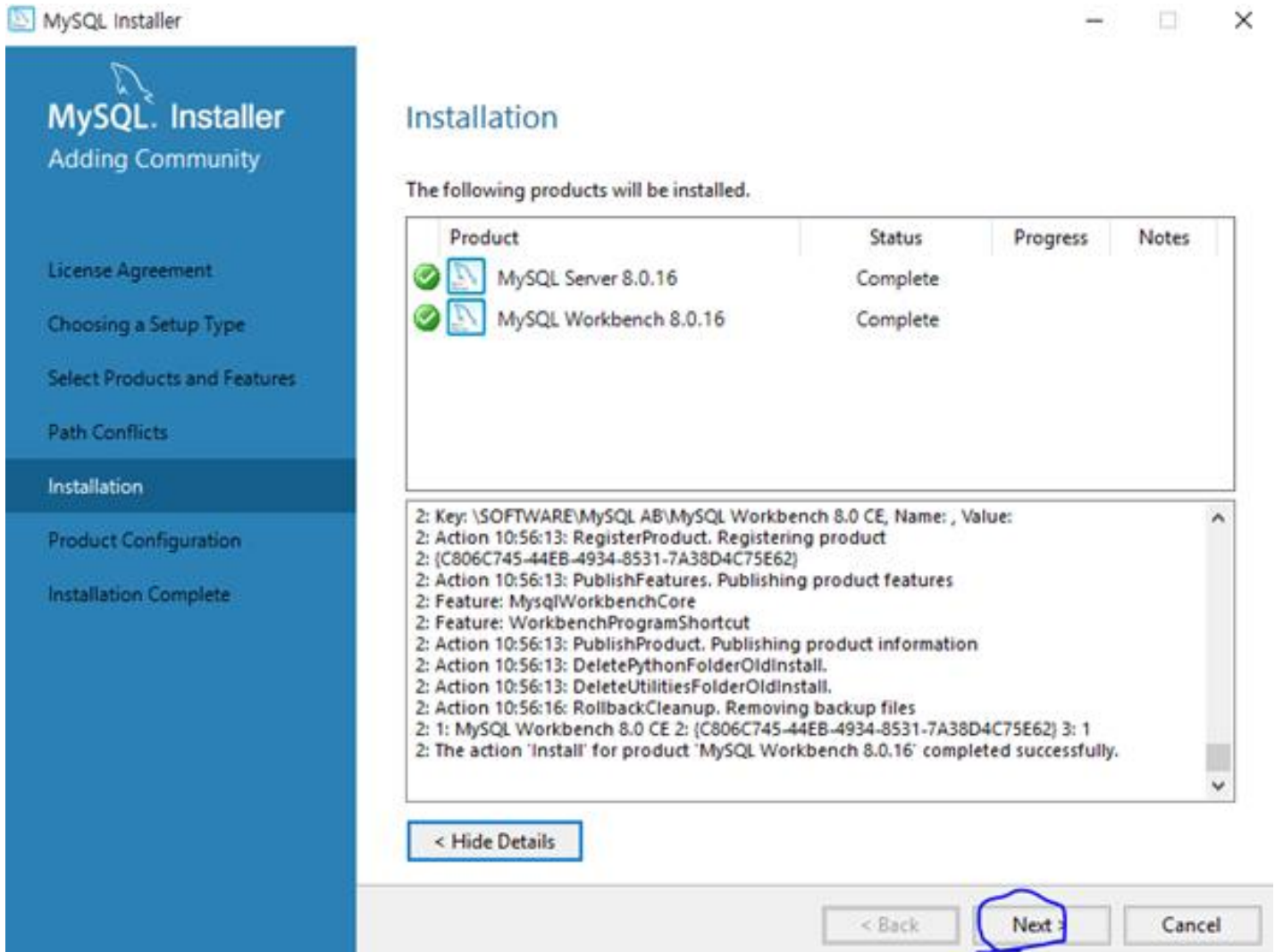
Click [Execute] to install the following packages.

&lt; Back

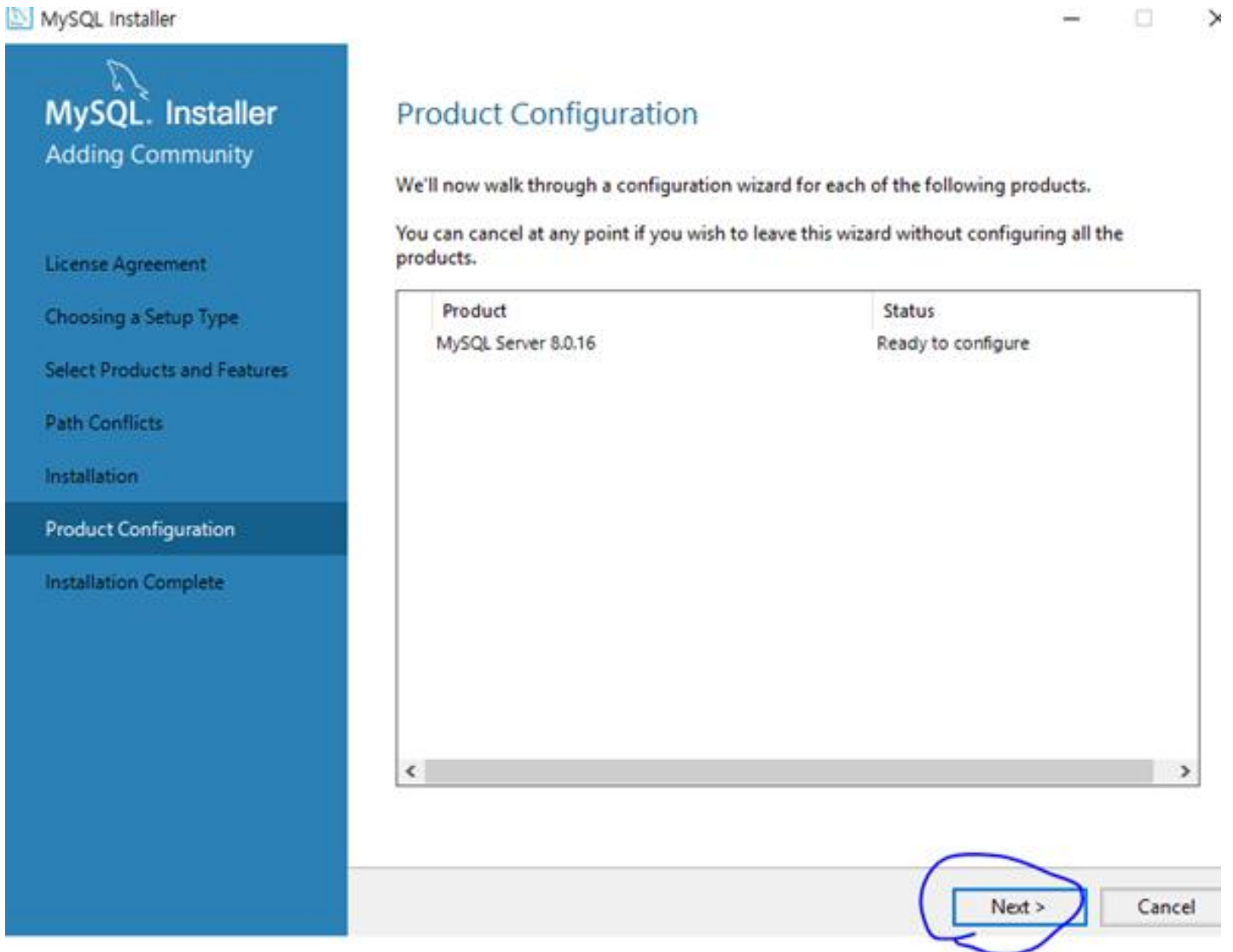
**Execute**

Cancel

12. 설치가 끝났으면 Next 클릭.



13. Next 클릭하여 서버 설정 시작.



## \* MySQL Server 설정

## 1. Standalone MySQL Server/Classic MySQL Replication 선택

MySQL Installer

## MySQL. Installer

MySQL Server 8.0.16

- High Availability
- Type and Networking
- Authentication Method
- Accounts and Roles
- Windows Service
- Logging Options
- Advanced Options
- Apply Configuration

### High Availability

Standalone MySQL Server / Classic MySQL Replication  
Choose this option to run the MySQL instance as a standalone database server with the opportunity to configure classic replication later. With this option, you can provide your own high-availability solution, if required.

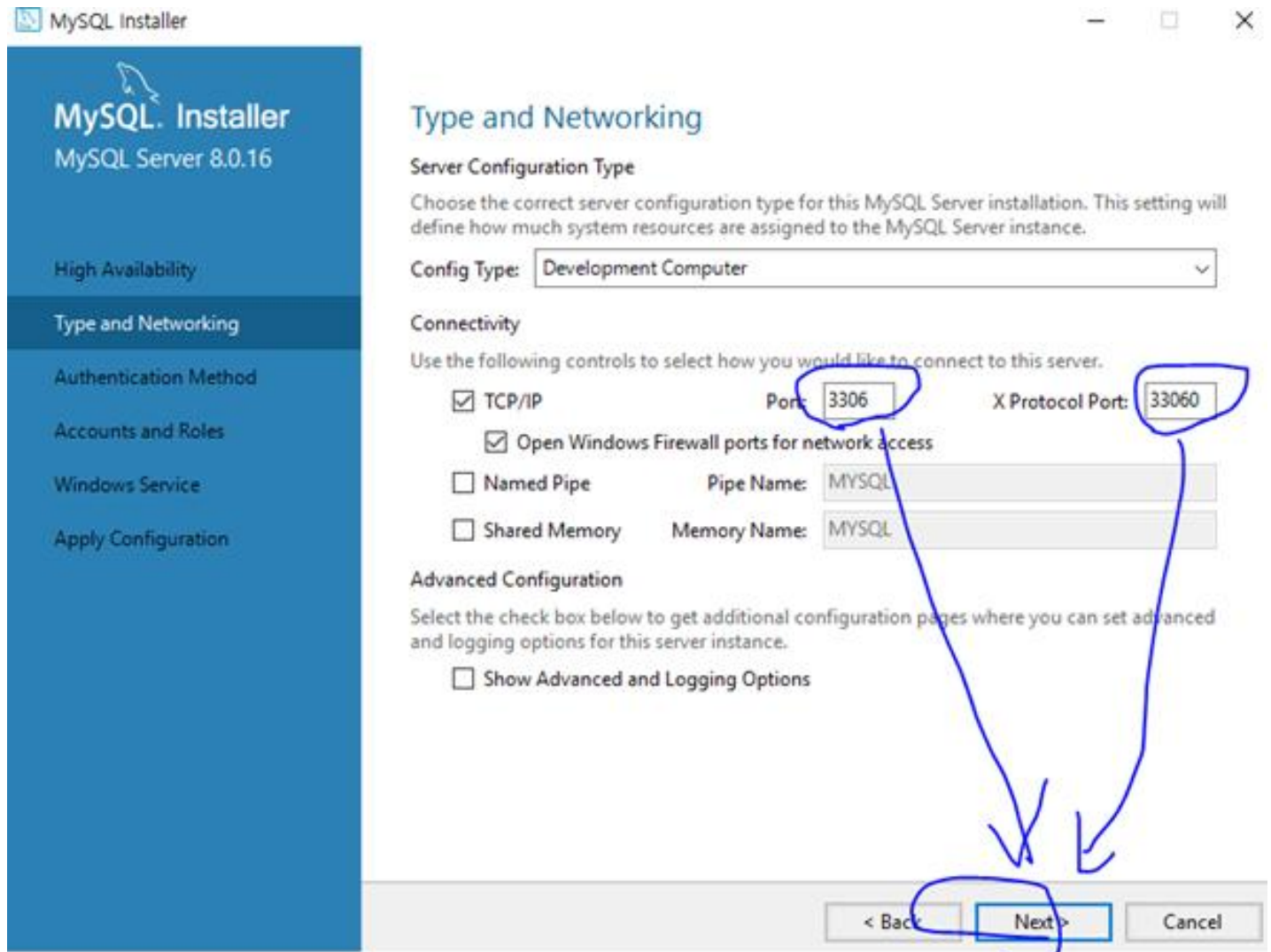
InnoDB Cluster [Why is this option disabled?](#)  
The InnoDB cluster technology provides an out-of-the-box high availability (HA) solution for MySQL using Group Replication.

```
graph LR; ClientApp[Client App] --> MySQLRouter[MySQL Router]; MySQLRouter <--> MySQLShell[MySQL Shell]; MySQLRouter --> InnoDBCluster((InnoDB Cluster)); InnoDBCluster --- MySQLShell;
```

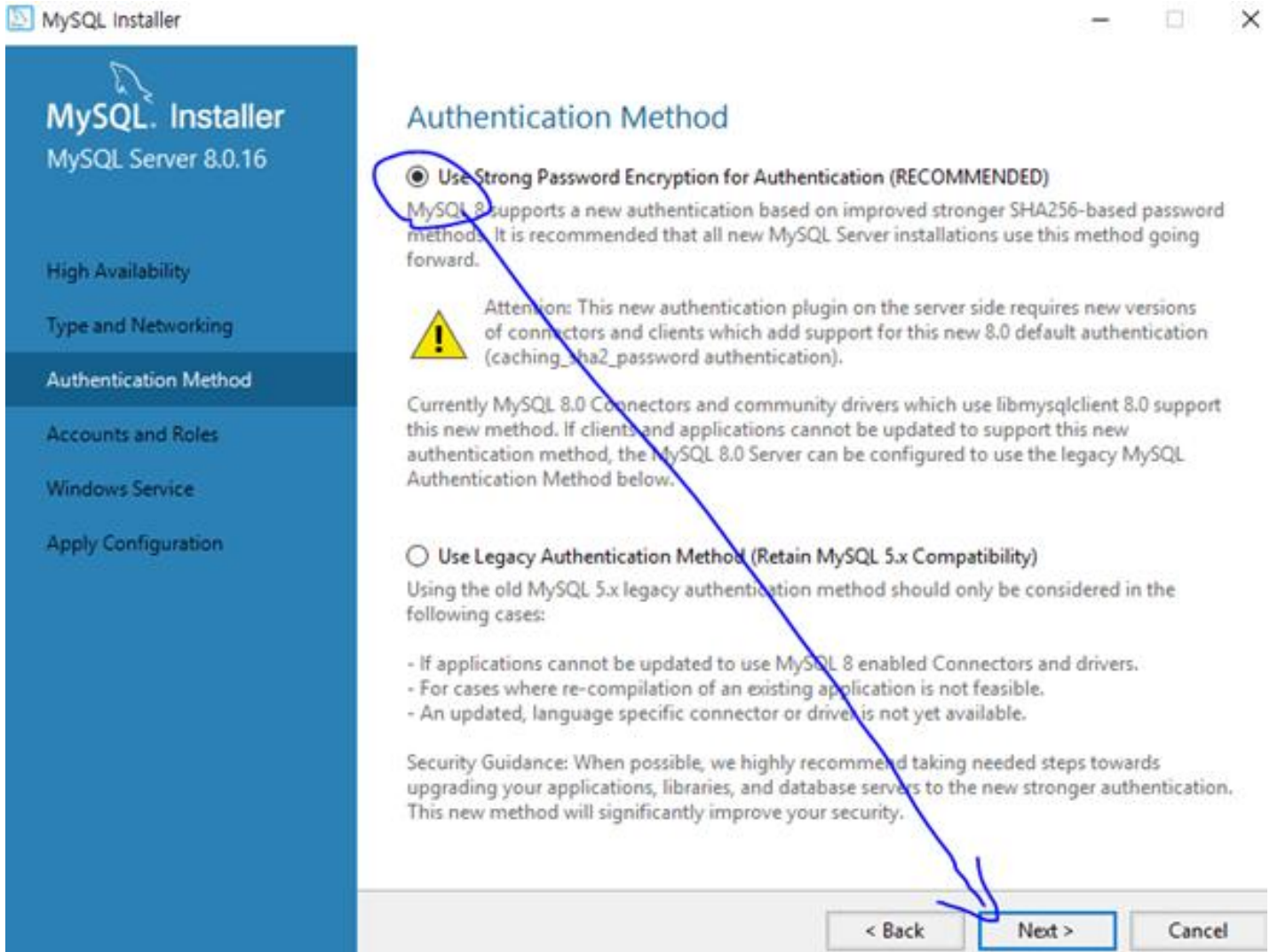
Note: [InnoDB cluster](#) requires a minimum of three MySQL server instances to provide a fully automated HA solution. Members of a cluster should be located such that network communication latency between servers is low.

Next > Cancel

2. Port번호 확인하고 넘어갈 것. 기본은 3306으로 되어있음.



## 3. 비밀번호 체계는 Use String password encryption for Authentication 선택



## 4. 관리자 Root 비밀번호 설정 후 Next (공용환경에서는 mysql로 지정)

MySQL Installer  
MySQL Server 5.7.21

Type and Networking  
Type and Networking  
**Accounts and Roles**  
Windows Service  
Plugins and Extensions  
Apply Configuration

### Accounts and Roles

**Root Account Password**  
Enter the password for the root account. Please remember to store this password in a secure place.

MySQL Root Password:

Repeat Password:

Password strength: **Weak**

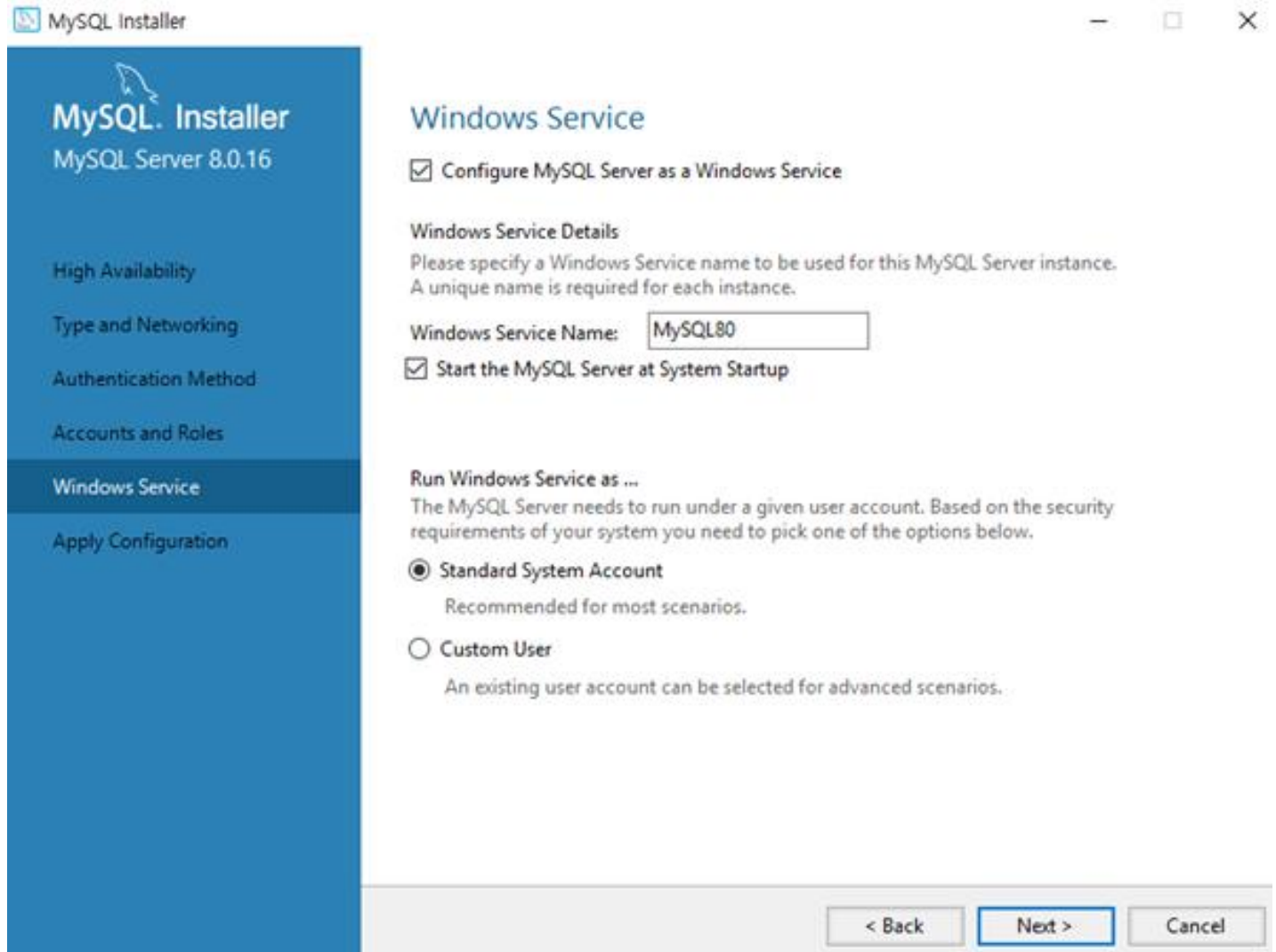
**MySQL User Accounts**  
Create MySQL user accounts for your users and applications. Assign a role to the user that consists of a set of privileges.

MySQL Username	Host	User Role
----------------	------	-----------

Add User  
Edit User  
Delete

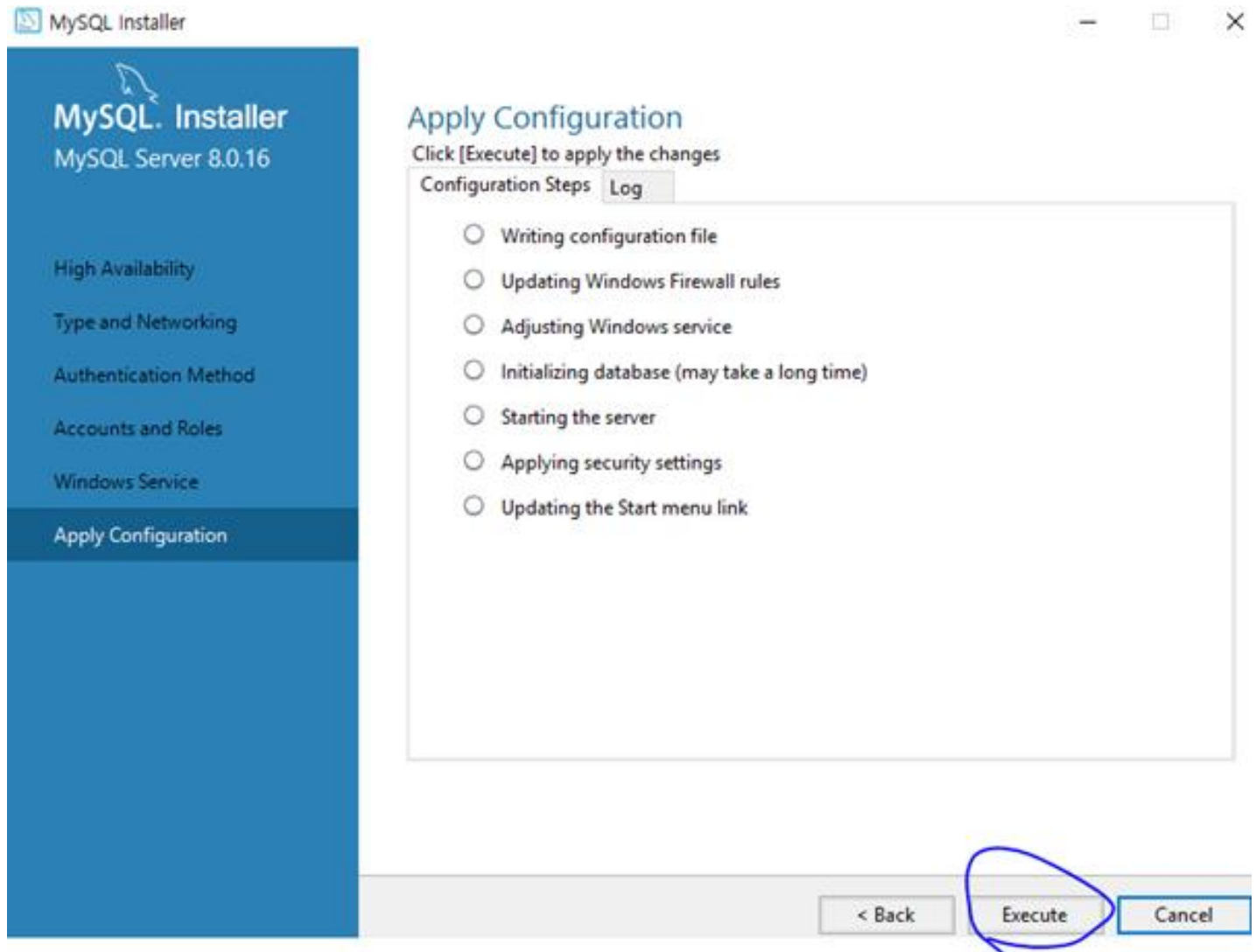
< Back   **Next >**   Cancel

5. Service Name 지정 후 Next 클릭(디폴트로 뒤도 된다)

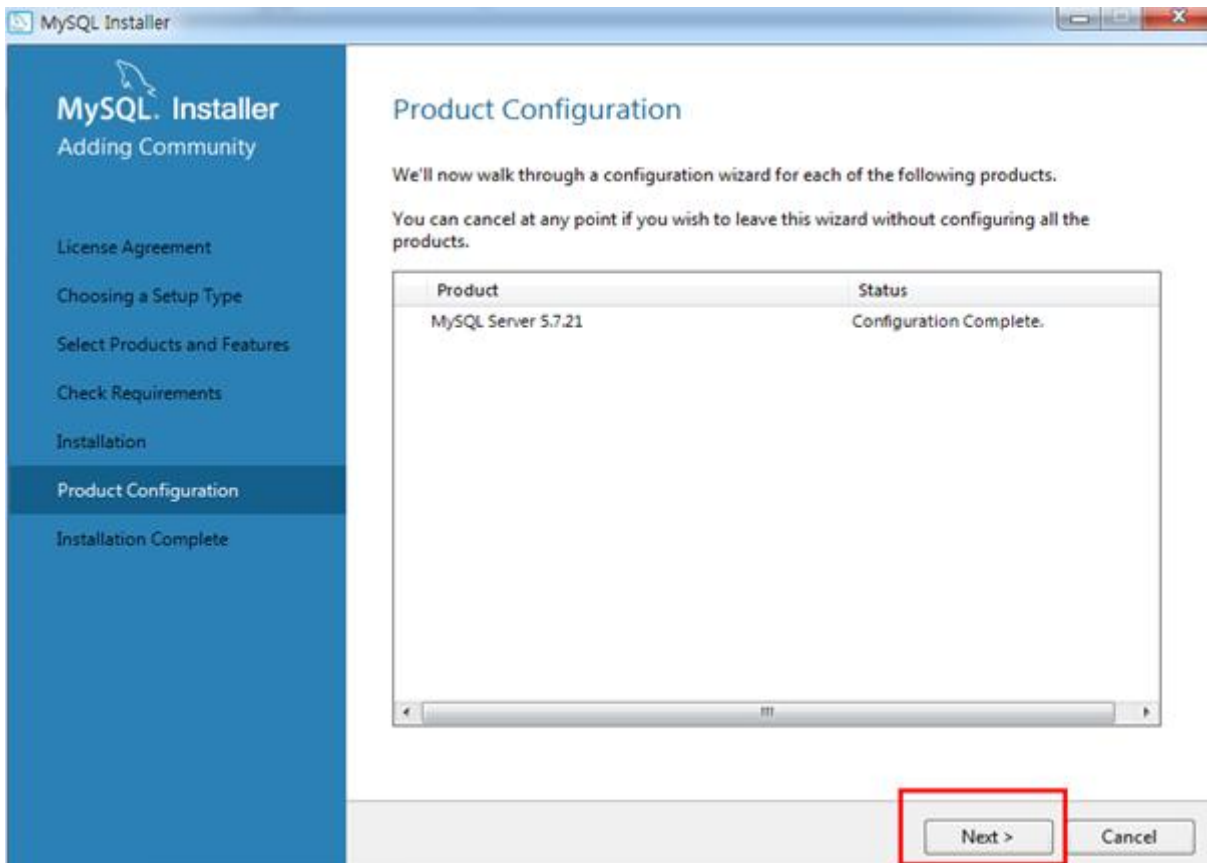
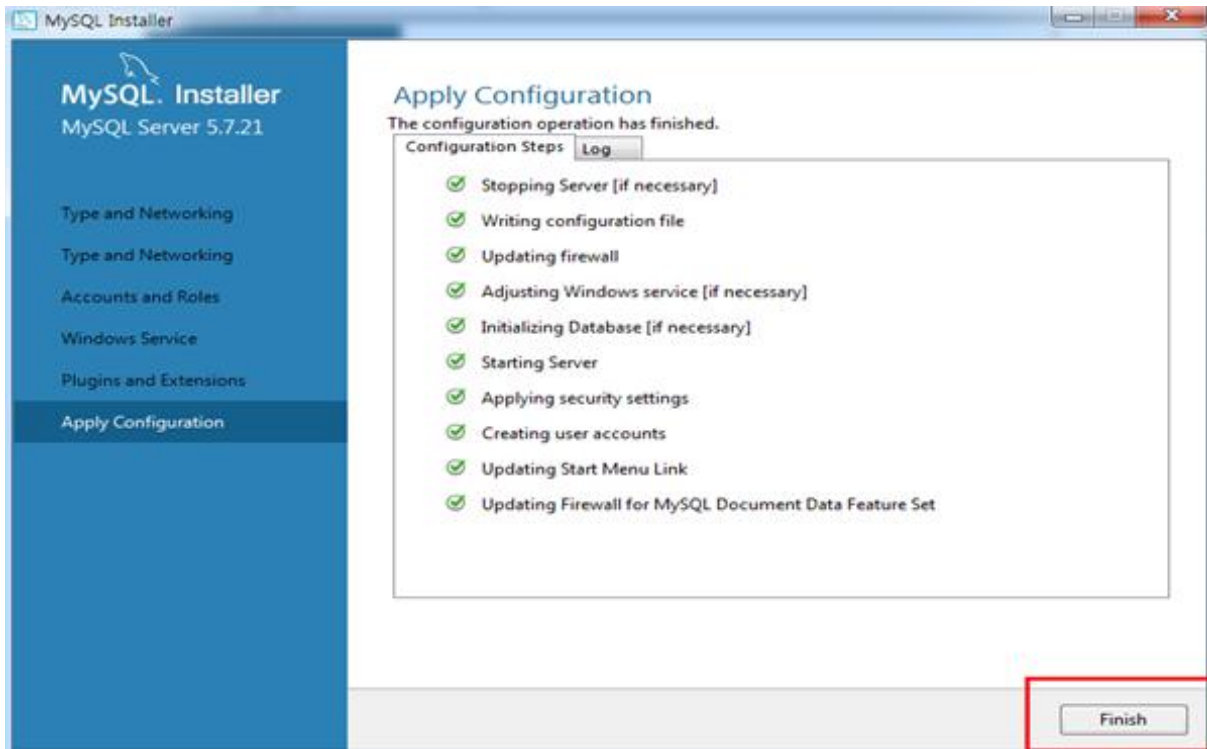




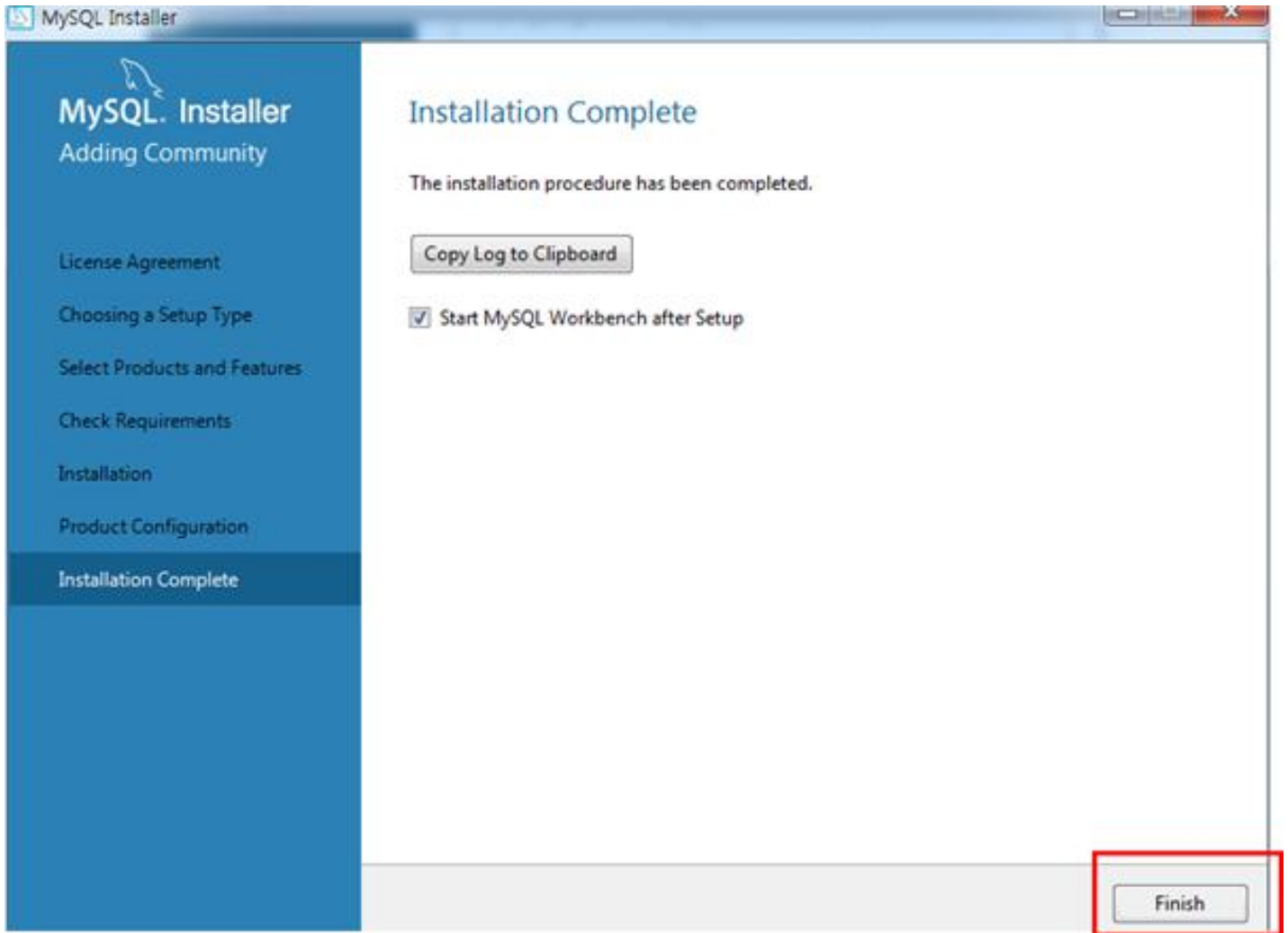
## 6. Next, Execute 클릭



## 7. Finish, Next 클릭

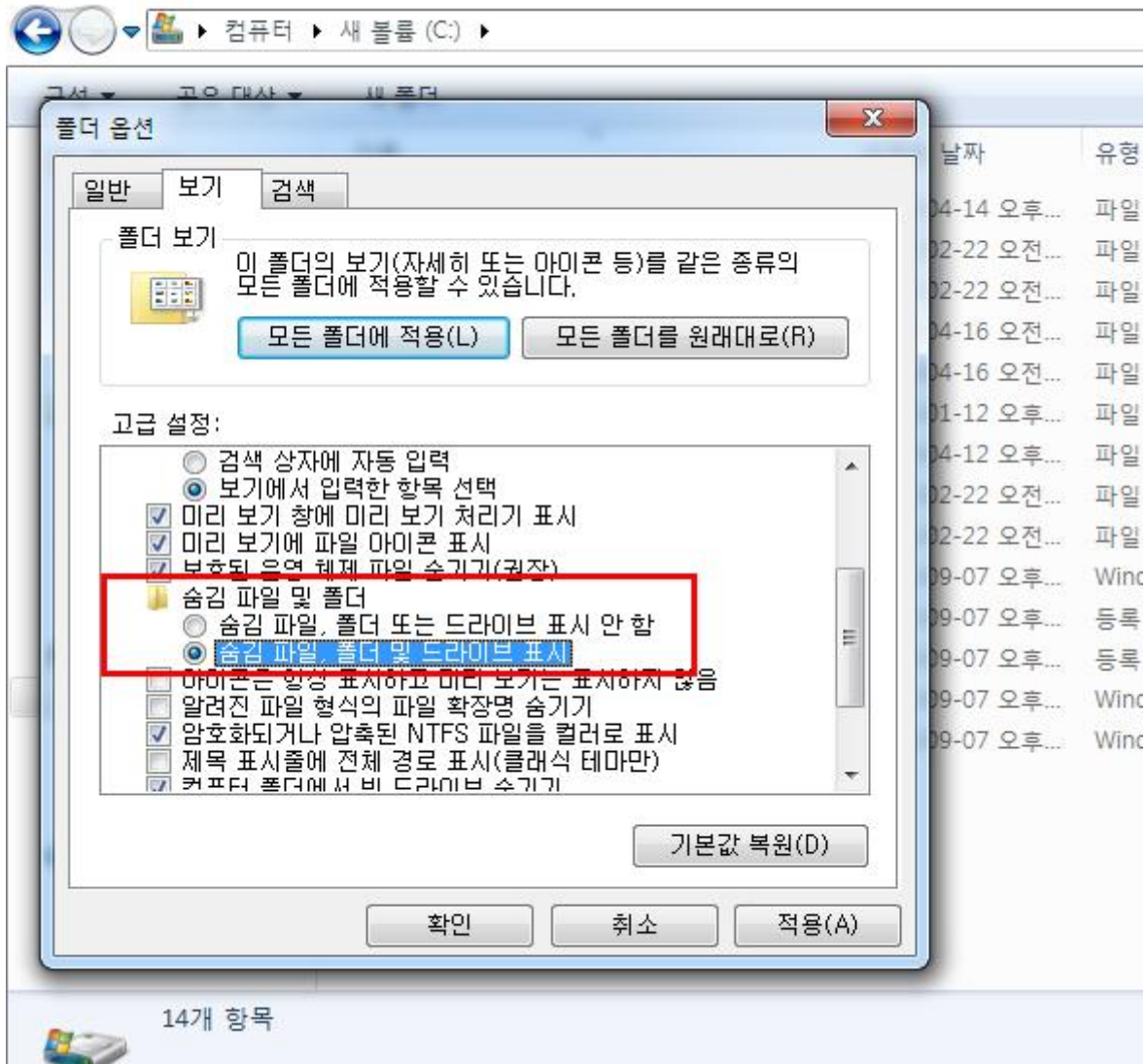


## 8. 설정 완료.

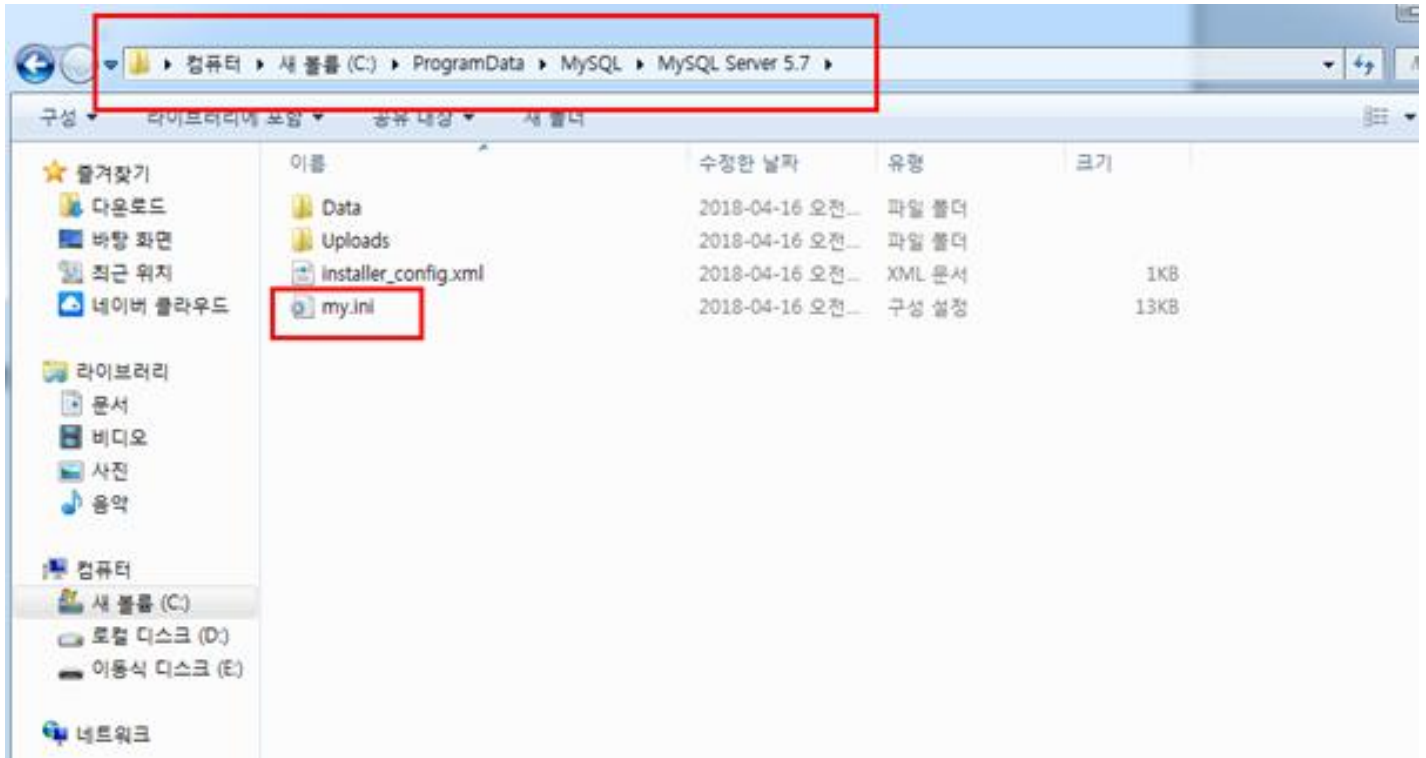


## \* MySQL 한글 인코딩 설정(8버전에선 생략해도 됩니다)

1. 내 컴퓨터 -&gt; C드라이브 클릭 -&gt; 폴더옵션에서 숨김 폴더 표시 체크



## 2. 숨겨진 폴더 ProgramData -&gt; MySQL -&gt; MySQL Server 5.7 폴더 연 뒤 my.ini 파일 수정



### 3. my.ini 파일 안에 다음 문장 추가

```
[client]  
default-character-set=utf8
```

```
[mysqld]  
character-set-server=utf8  
collation-server=utf8_general_ci  
init_connect=SET collation_connection=utf8_general_ci  
init_connect=SET NAMES utf8
```

```
[mysql]  
default-character-set=utf8
```

## 4. 설정이 완료된 모습

#

```
[client]
default-character-set=utf8
```

```
# pipe
# socket=0,0
port=3306
```

```
[mysql]
no-beep

default-character-set=utf8
```

# SERVER SECTION

#

#

```
# The following options will be read by the MySQL Server. Make sure that
# you have installed the server correctly (see above) so it reads this
# file.
```

#

# server\_type=3

```
[mysqld]
character-set-server=utf8
collation-server=utf8_general_ci
init_connect=SET collation_connection=utf8_general_ci
init_connect=SET NAMES utf8
```

```
# The next three options are mutually exclusive to SERVER_PORT below.
```

```
# skip-networking
```

5. MySQL Workbench 실행 후 한글 인코딩 확인, 이미 워크벤치가 실행중이라면 재실행한다.

# welcome to MySQL WORKBENCH

MySQL Workbench is the official graphical user interface (GUI) tool for MySQL. It allows you to design, create and browse your database schemas, work with database objects and insert data as well as design and run SQL queries to work with stored data. You can also migrate schemas and data from other





## 6. System Variable 탭 아래 'char' 입력 후 한글 인코딩 확인.

The screenshot shows the 'Server Variables' window in SQL Server Enterprise Manager. The 'System Variables' tab is active, and 'char' is entered in the search box. The table below displays the values for various character set variables.

Name	Value	Description
character_set_client	utf8	[rw] Current client character set
character_set_connection	utf8	[rw] Current connection character set
character_set_database	utf8	[rw] The character set used by the default database
character_set_filesystem	binary	[rw] Set the file system character set
character_set_results	utf8	[rw] Current result character set
character_set_server	utf8	[rw] Specify default character set
character_set_system	utf8	The character set used by the server for storing identifiers
character_sets_dir	C:\Program Files\My...	Directory where character sets are installed